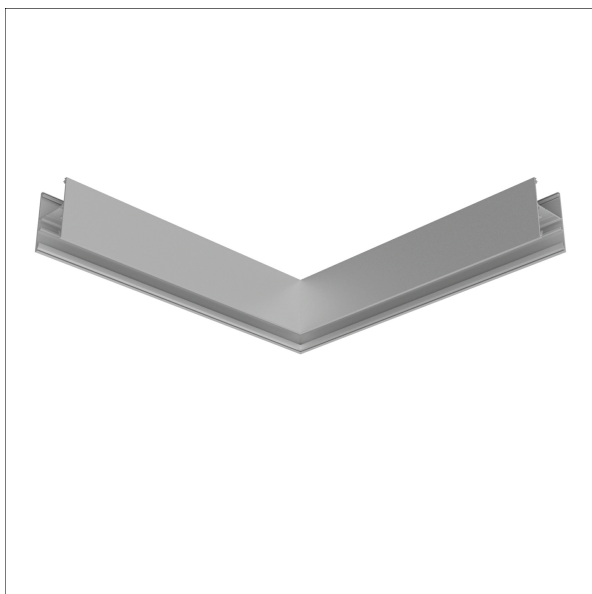
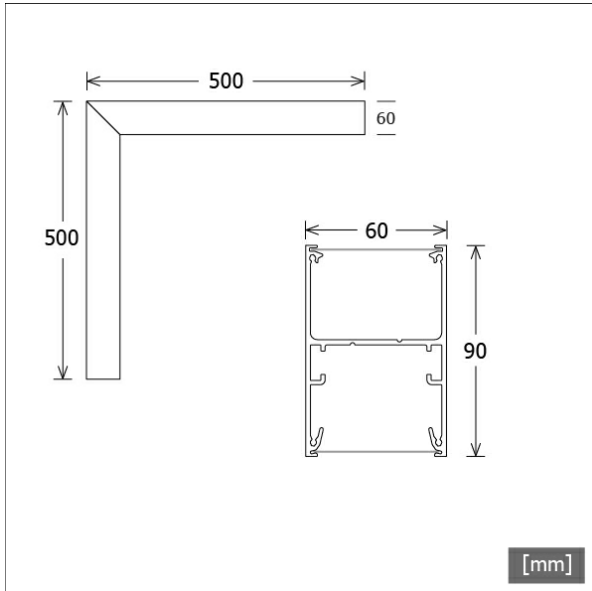


LKDI-P 060.001.090 OAG



Colours	Article no.	EAN
silver	665201	4043544743374
black	665202	4043544743381
white	665203	4043544743398



Description

- 90° corner profile suitable for light trunking system with direct-indirect lighting
- high-quality extruded aluminium profile for easy ceiling or suspended mounting
- light control via highly efficient nanoOptix foils from LTS with microlens structure and various beam characteristics (batwing/wide-beam, narrow-beam, wallwasher) or via standard "opal diffuse" foil
- light-inserts and (necessary) accessories to be ordered separately
- without foils

Notes

The linear thermal expansion of the aluminium profile is about 0.3 mm per meter at $\Delta T = 10$ Kelvin.

Lighting data / Norms

Type of protection IP20

Dimensions / Weights

Length	500 mm
Width	60 mm
Height	90 mm
Net weight	2.76 kg
Gross weight	2.90 kg

Special dimensions

side length = 500 mm

LKDI-P 060.001.090 OAG

Accessories



LKDI-Z 060.100
connection kit with earthing



LKDI-Z 060.103.03/DIM
wire-rope kit with feed-in DALI
(5-core, length: 3000 mm)



LKDI-Z 060.114
wall bracket
(1 piece)



STRL-LK-Z 070-060.102.00
connector kit linear



STRL-LK060-Z 690.BW-WB.03
light-control foil nanoOptix "batwing and wide beam"
(length: 3 m)



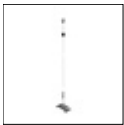
STRL-LK060-Z 690.DB.03
light-control foil nanoOptix "deep beam"
(length: 3 m)



STRL-LK060-Z 690.OPDF.03
light-control foil "opal diffuse"
(length: 3 m)



STRL-LK060-Z 690.WW.03
light-control foil nanoOptix "wallwasher"
(length: 3 m)



STRL-LKDI-Z 060.104.03
wire-rope kit without feed-in
(length: 3000 mm)